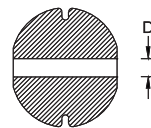
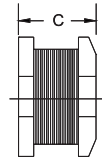
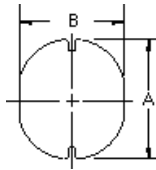


HPC0705 TYPE

TYPE

DIMENSION

HPC 0705: 10 μ H ~ 470 μ H



A : 7.8 \pm 0.3
B : 7.0 \pm 0.3
C : 5.0 \pm 0.5
D : 2.1 REF

SPECIFICATION

ITEM	L	DCR	IDC
HPC0705	(μ H)	MAX. (Ω)	MAX. (A)
100K	10 \pm 10%	0.07	2.30
120K	12 \pm 10%	0.08	2.00
150K	15 \pm 10%	0.09	1.80
180K	18 \pm 10%	0.10	1.60
220K	22 \pm 10%	0.11	1.50
270K	27 \pm 10%	0.12	1.30
330K	33 \pm 10%	0.13	1.20
390K	39 \pm 10%	0.16	1.10
470K	47 \pm 10%	0.18	1.10
560K	56 \pm 10%	0.24	0.94
680K	68 \pm 10%	0.28	0.85
820K	82 \pm 10%	0.37	0.78
101K	100 \pm 10%	0.43	0.72
121K	120 \pm 10%	0.47	0.66
151K	150 \pm 10%	0.64	0.58
181K	180 \pm 10%	0.71	0.51
221K	220 \pm 10%	0.96	0.49
271K	270 \pm 10%	1.11	0.42
331K	330 \pm 10%	1.26	0.40
391K	390 \pm 10%	1.77	0.36
471K	470 \pm 10%	1.96	0.34

K: \pm 10%

* Hong can design any part to your requirements with different inductance.

* All parameters as this content presented are subject to final specifications both sides confirmed.